

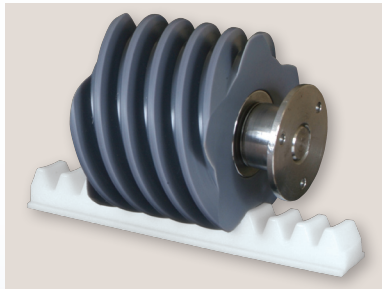


Sierra Inclined Platform Lift



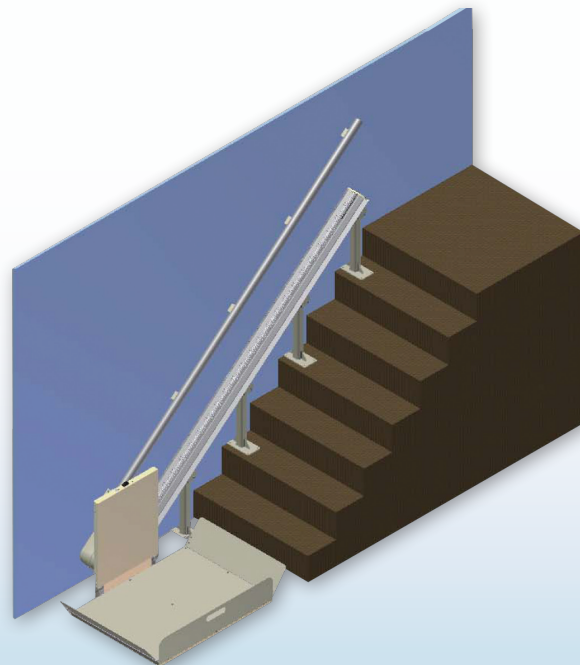
Safety and Security

Sensors on the platform ramps, drive chassis and under platform safety pan stop the lift immediately if an obstruction is encountered



Unique Drive System

Requires no greases or lubricants. Extremely energy efficient.



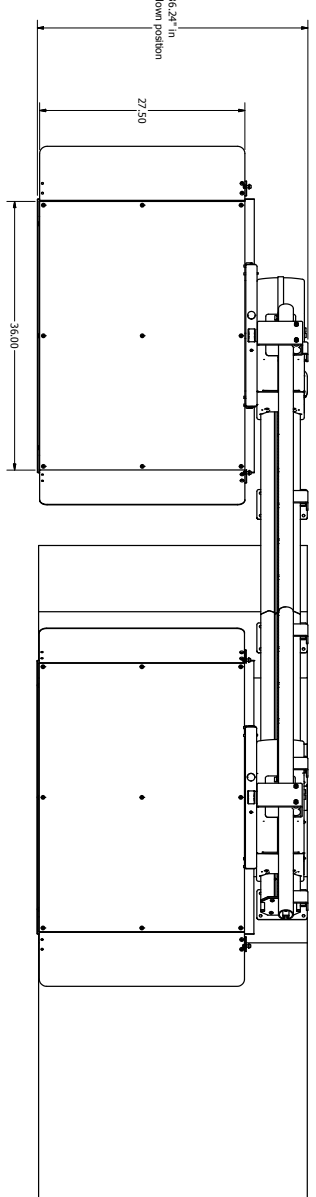
Features

- For use in residential applications
- Designed for use indoors and outdoors
- Mounts to the stairs not the wall!
- Only 12" from the wall when folded
- Innovative design is based on the proven SL600 Pinnacle Stair Lift drive system and utilizes the same track
- Auto-folding ramps on both ends of the platform
- Wall mounted guide rail doubles as a convenient hand rail

Sierra Inclined Platform Lift Specifications

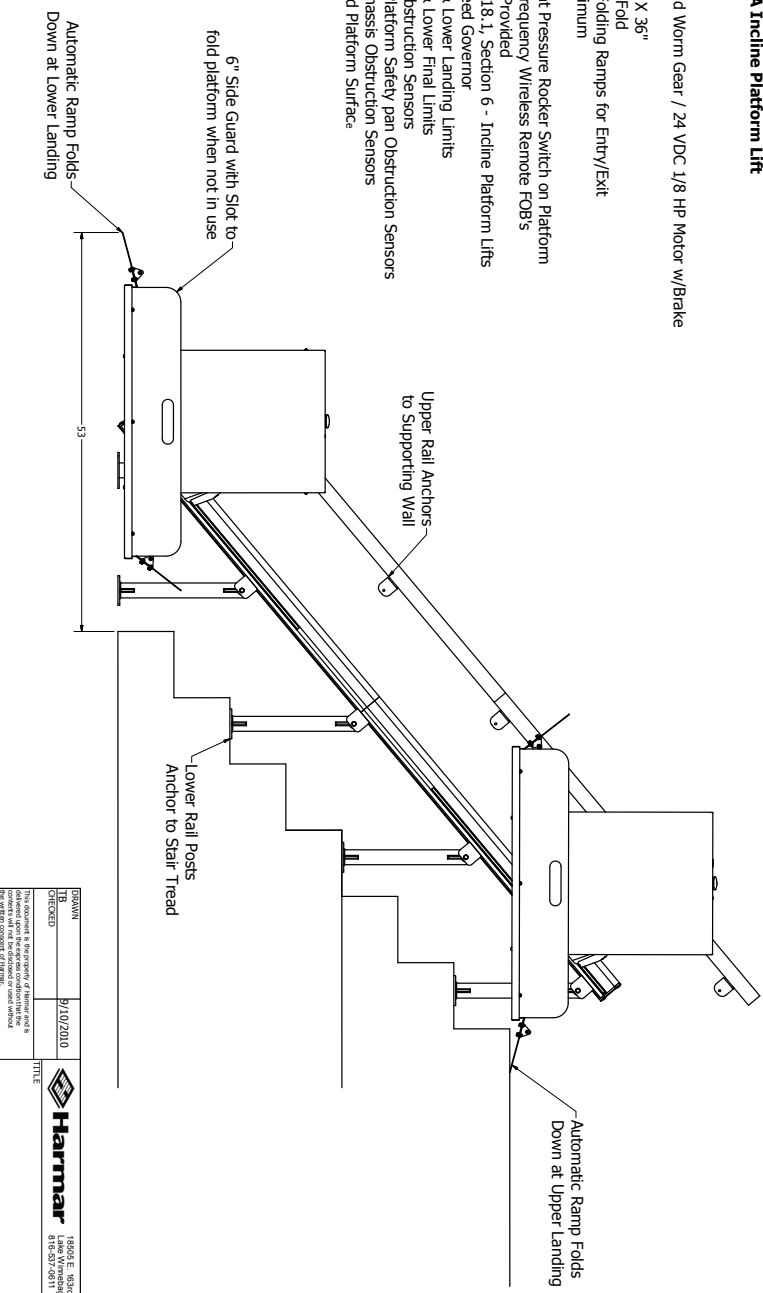
Rated Load	500 lbs
Drive	Rack and worm gear / 24 VDC 1/8 hp motor with brake
Power Supply	115 VAC 15 amp grounded circuit
Control Circuit	24 VDC
Platform	27.5" x 36" Manual fold Power folding ramps for entry and exit
Travel	40 feet maximum
Speed	14 feet per minute

Controls	Constant pressure rocker switch on platform Radio frequency wireless remote fobs
Manual Lowering	Device provided
Safety Design Standards	ASME A18.1, Section 6 - Incline Platform Lifts
Safety Features	Overspeed governor Upper and lower landing limits Upper and lower final limit Ramp obstruction sensors Under platform safety pan obstruction sensors Drive chassis obstruction sensors Non-skid surface



Specifications
SIERRA Incline Platform Lift

- Model:** IPL600
- Rated Load:** 500 lbs
- Drive:** Rack and Worm Gear / 24 VDC 1/8 HP Motor w/Brake
- Control Circuit:** 24 VDC
- Platform:** 27 1/2" X 36"
- Manual Fold:** Power Folding Ramps for Entry/Exit
- Travel:** 40' Maximum
- Speed:** 14 FMP
- Controls:** Constant Pressure Rocker Switch on Platform
- Manual Lowering:** Radio Frequency/ Wireless Remote FOB's Device Provided
- Safety Design Standards:** ASME A18.1, Section 6 - Incline Platform Lifts
- Safety Features:**
 - Over-speed Governor
 - Upper & Lower Landing Limits
 - Ramp obstruction Sensors
 - Under Platform Safety pan Obstruction Sensors
 - Drive Chassis Obstruction Sensors
 - Non-Skid Platform Surface



ISSUANCE	9/10/2010	TITLE										
CHECKED		DATE										
<p>Harmar 1800 E. HIGH RD. LAWYERSVILLE, MD 20634 818-577-0811</p>												
THIRD ANGLE PROJECTION	<table border="1"> <tr> <td>SIZE</td> <td>FINISH</td> <td>DATE NO.</td> </tr> <tr> <td>D</td> <td></td> <td>IL600</td> </tr> </table>	SIZE	FINISH	DATE NO.	D		IL600	<table border="1"> <tr> <td>SCALE</td> <td>SHEET</td> </tr> <tr> <td></td> <td>OF 1</td> </tr> </table>	SCALE	SHEET		OF 1
SIZE	FINISH	DATE NO.										
D		IL600										
SCALE	SHEET											
	OF 1											

